

## DATA SHEETS ATTACHMENTS

### Please note:

An overview of all available attachments is available on our website:

[www.schaeffer.de/attachments](http://www.schaeffer.de/attachments)

This document is continuously updated and provides detailed information on the following attachments:

### BUCKETS



Waste-handling grab bucket . . . . .	2
Soil bucket HD . . . . .	3
High volume bucket . . . . .	4
High volume bucket XL . . . . .	5
Grapple bucket . . . . .	6
General bucket . . . . .	7
General bucket HD . . . . .	8

### FARMING AND HORSE HUSBANDRY



Bale gripper for round bales . . . . .	9
Paddock cleaner . . . . .	10

### GREEN AREA MAINTENANCE



Dual blade mower . . . . .	11
Flail mower SE . . . . .	12
Flail mower SE with collecting tray . . . . .	13
Fence trimmer . . . . .	14

### CLEANING



Bucket sweeper . . . . .	15
Push broom . . . . .	16
Weed brush . . . . .	17

### WINTER ROAD MAINTENANCE



Salt spreader . . . . .	18
-------------------------	----

### SPECIAL APPLICATIONS



Working platform . . . . .	19
Tree stump grinder . . . . .	20
Soil reversal tiller . . . . .	21
Post hole driller . . . . .	22
Levelling machine . . . . .	23
Dumpster box . . . . .	24
Container on wheels . . . . .	25

## WASTE-HANDLING GRAB BUCKET

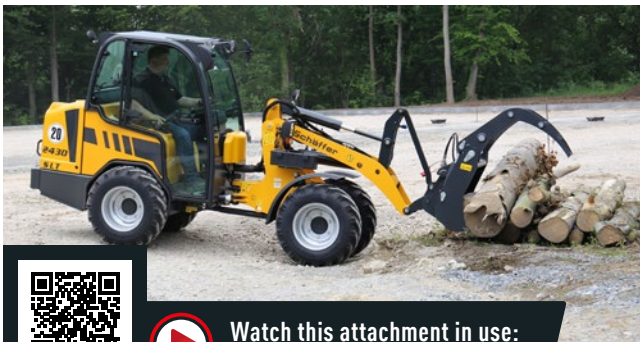


The waste-handling grab bucket is the ideal implement for collecting and handling bulky materials, rubble and wood.

The bucket has no sides for easy handling of timber logs.

### All advantages at a glance

- Bucket without sides for easy handling of bulky materials and timber logs
- Heavy-duty bucket with powerful grab



Watch this attachment in use:  
[www.schaeffer.de/en/videos](http://www.schaeffer.de/en/videos)

Width	Volume	2024	2024 SLT	2028-2	2028 SLT	23e	24e	2428-2	2428 SLT	2430	2430 SLT	2445 S	2628	2630	2630 SLT	2630 T SLT	3630	3650	3650 SLT	3650 T	3650 T SLT	4670	4670 Z	4670 T	5470 Z	5680 Z	5680 T	6680 Z	6680 T	8620 T-2
1.10 m	462 l	☐	■	■	■	☐	☐	■	■	■	■	☐	☐	☐	■	■	☐	☐	☐											
1.20 m	504 l	■	■	■	■	■	■	■	■	■	■	■	■	■	■		☐	☐	☐											
1.40 m	588 l	■	■	■	■	■	■	■	■	■	■	■	■	■	■	☐	■	■	■	☐	☐	☐	☐	☐						
1.60 m	672 l					■	■	☐	☐	☐	☐	■	☐	☐	☐	■	☐	■	■	■	■	■	■	■						
1.80 m	756 l					☐	☐					☐				■		☐	☐	■	■	■	■	■	■	■	■	☐	☐	☐

Available for all major coupling options.

☐ = good match   ■ = perfect match

Date of issue: March 2022 | Subject to technical changes.

## SOIL BUCKET HD / HD+



Soil bucket HD

Robust soil bucket with standard spill guard for heavy-duty applications. Transport guard, bolt-on teeth and reversible blade are options.

### All advantages at a glance

- Short bucket base optimises break-out forces
- High-tensile HB 400 blade
- Levelling blade

### Options

- Bolt-on teeth
- Transport guard
- Reversible blade

Width	Volume	Weight	2024	2024 SLT	2028-2	2028 SLT	23e	23e T	24e	2428-2	2428 SLT	2430	2430 SLT	2445 S	2628	2630	2630 SLT	2630 T SLT	3630	3650	3650 SLT	3650 T	3650 T SLT	4670	4670 Z	4670 T
1.00 m	0.40 m <sup>3</sup>	176 kg	■	■	■	■	■		■	■	■	■	■	□	□	■	■		□	□	□					
1.20 m	0.48 m <sup>3</sup>	187 kg	■	■	■	■	■	□	■	■	■	■	■	■	■	■	■	□	■	■	■	□	□	□		
1.30 m	0.52 m <sup>3</sup>	198 kg	□	□	□	□	■	□	■	□	□	■	■	■	□	■	■	□	■	■	■	□	□	□		
1.40 m	0.56 m <sup>3</sup>	209 kg	□	□	□	□	■	■	■	□	□	□	□	■	□	□	□	■	■	■	■	■	■	■	□	□
1.50 m	0.60 m <sup>3</sup>	220 kg					□	■	■			□	□	■		□	□	■	□	■	■	■	■	■	■	■
1.60 m	0.64 m <sup>3</sup>	231 kg					□	■	■					■				■	□	■	■	■	■	■	■	■
1.70 m	0.68 m <sup>3</sup>	260 kg					□	□	□									□		□	□					

All major coupling options available. □ = good match ■ = perfect match

Width	Volume	Weight	5470 Z	5680 Z	5680 T	6680 Z / 6680 Z-2	6680 T / 6680 T-2	8620 T-2	9640 T-2	9660 T-2
1.80 m	0.98 m <sup>3</sup>	353 kg	■	■	■	■	■	□		
2.00 m	1.03 m <sup>3</sup>	375 kg	■	■	■	■	■	■	□	
2.20 m	1.19 m <sup>3</sup>	397 kg				■	■	■	□	□
2.40 m	1.30 m <sup>3</sup>	433 kg				□	□	■	■	■

All major coupling options available. □ = good match ■ = perfect match

## HIGH VOLUME BUCKET

Universal high volume bucket for wheel loaders and telescopic wheel loaders.

### All advantages at a glance

- Heavy-duty build
- Conical design for optimum filling and emptying
- Height: 105 cm
- Depth: 140 cm

### Options

- Spill guard
- Bolt-on reversible blade HB 500



Width	Volume	Weight	5470 Z	5680 Z	5680 T	6680 Z / 6680 Z-2	6680 T / 6680 T-2	8620 T-2	9640 T-2	9660 T-2
2.00 m	1.75 m <sup>3</sup>	525 kg	☐	☐	☐	■	■	☐		
2.20 m	1.94 m <sup>3</sup>	540 kg				■	■	■	☐	☐
2.40 m	2.11 m <sup>3</sup>	559 kg						■	■	■

All major coupling options available. ☐ = good match ■ = perfect match

## HIGH VOLUME BUCKET XL



This heavy-duty and high volume bucket XL handles bulk goods of low and medium densities.

### All advantages at a glance

- Heavy-duty build
- Inspection grille
- Height: 121 cm
- Depth: 144 cm

### Options

- Spill guard
- Bolt-on reversible blade – HB 500 or plastic



Width	Volume	Weight	5470 Z	5680 Z	5680 T	6680 Z / 6680 Z-2	6680 T / 6680 T-2	8620 T-2	9640 T-2	9660 T-2
2.00 m	2.30 m <sup>3</sup>	612 kg	☐	☐	☐	■	■	☐		
2.45 m	3.00 m <sup>3</sup>	712 kg						■	■	■
2.60 m	3.20 m <sup>3</sup>	761 kg							■	■

All major coupling options available. ☐ = good match ■ = perfect match

## PELICAN SHOVEL



This universal pelican shovel with removable sides is ideal for handling manure and other materials.

### All advantages at a glance

- Very sturdy and high-quality build
- Hard-wearing HB 400 bar
- Removable bolt-on sides
- High grab force from two hydraulic rams
- Loads towards a wall with open and closed bucket



Width	Volume	Weight	23e	23e T	24e	2428-2	2428 SLT	2430	2430 SLT	2445 S	2628	2630	2630 SLT	2630 T SLT	3630	3650	3650 SLT	3650 T	3650 T SLT	4670	4670 Z	4670 T	5470 Z	5680 Z	5680 T	6680 Z / 6680 Z-2	6680 T / 6680 T-2	8620 T-2	9640 T-2	9660 T-2	
1.60 m	0.89 m <sup>3</sup>	275 kg	☐	☐	☐					☐				☐	☐	☐	☐	■	■	■	■	☐	☐	☐							
1.80 m	1.02 m <sup>3</sup>	300 kg																☐	☐	☐	■	■	■	■	■	■	■	☐			
2.00 m	1.14 m <sup>3</sup>	326 kg																					☐	☐	■	■	☐				
2.20 m	1.27 m <sup>3</sup>	357 kg																							☐	■	■	☐	☐		
2.40 m	1.40 m <sup>3</sup>	385 kg																							☐	☐	■	■	■		

All major coupling options available. ☐ = good match ■ = perfect match



## GENERAL BUCKET



The general bucket is the bucket of choice for all daily operations. Offering a larger capacity than the soil bucket, it handles all kinds of bulk goods including grain, fertiliser granules and gravel.

### All advantages at a glance

- Curved body and convex sides for optimum filling
- Rugged build
- Height: 78 cm
- Depth: 100 cm

### Options

- Reversible blade
- Spill guard



Width	Volume	Weight	2024	2024 SLT	2028-2	2028 SLT	23e	23e T	24e	2428-2	2428 SLT	2430	2430 SLT	2445 S	2628	2630	2630 SLT	2630 T SLT	3630	3650	3650 SLT	3650 T	3650 T SLT	4670
0.90 m	0.43 m <sup>3</sup>	145 kg	■	■	■	■	□		□	■	■	□	□	□	□	□								
1.00 m	0.47 m <sup>3</sup>	154 kg	■	■	■	■	■		■	■	■	■	■	□	□	■	■		□	□	□			
1.10 m	0.53 m <sup>3</sup>	166 kg	■	■	■	■	■		■	■	■	■	■	■	■	■	■		□	■	■			
1.20 m	0.59 m <sup>3</sup>	174 kg	■	■	■	■	■	□	■	■	■	■	■	■	■	■	■	□	■	■	■	□	□	□
1.30 m	0.64 m <sup>3</sup>	183 kg	□	□	□	□	■	□	■	□	□	■	■	■	□	■	■	□	■	■	■	□	□	□
1.40 m	0.70 m <sup>3</sup>	200 kg	□	□	□	□	■	■	■	□	□	□	□	■	□	□	□	■	■	■	■	■	■	■
1.50 m	0.75 m <sup>3</sup>	210 kg					□	■	■			□	□	■		□	□	■	□	■	■	■	■	■
1.60 m	0.81 m <sup>3</sup>	219 kg					□	■	■					■				■	□	■	■	■	■	■

All major coupling options available. □ = good match ■ = perfect match

## GENERAL BUCKET HD



The general bucket HD is the bucket of choice for all daily operations. Offering a larger capacity than the soil bucket, it handles all kinds of bulk goods including grain, fertiliser granules and gravel.

### All advantages at a glance

- Curved body for optimum filling
- Rugged build
- Height: 81 cm
- Depth: 108 cm

### Options

- Bolt-on reversible blade
- Spill guard

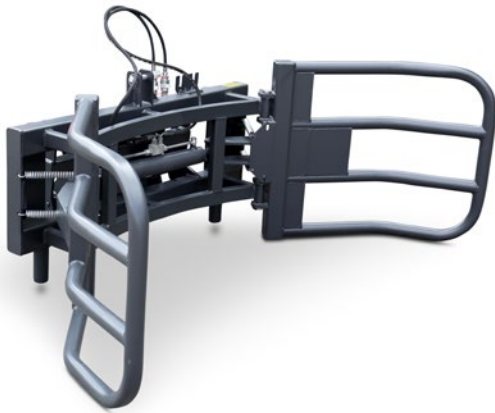


Width	Volume	Weight	23e	23e T	24e	2428-2	2428 SLT	2430	2430 SLT	2445 S	2628	2630	2630 SLT	2630 T SLT	3630	3650	3650 SLT	3650 T	3650 T SLT	4670	4670 Z	4670 T	5470 Z	5680 Z	5680 T	6680 Z / 6680 Z-2	6680 T / 6680 T-2	8620 T-2	9640 T-2	9660 T-2
1.60 m	0.89 m <sup>3</sup>	275 kg	<input type="checkbox"/>	<input type="checkbox"/>	<input type="checkbox"/>					<input type="checkbox"/>				<input type="checkbox"/>	<input type="checkbox"/>	<input type="checkbox"/>	<input type="checkbox"/>	<input checked="" type="checkbox"/>	<input checked="" type="checkbox"/>	<input checked="" type="checkbox"/>	<input checked="" type="checkbox"/>	<input checked="" type="checkbox"/>	<input type="checkbox"/>	<input type="checkbox"/>	<input type="checkbox"/>					
1.80 m	1.02 m <sup>3</sup>	300 kg																<input type="checkbox"/>	<input type="checkbox"/>	<input type="checkbox"/>	<input checked="" type="checkbox"/>	<input checked="" type="checkbox"/>	<input checked="" type="checkbox"/>	<input checked="" type="checkbox"/>	<input checked="" type="checkbox"/>	<input checked="" type="checkbox"/>	<input type="checkbox"/>			
2.00 m	1.14 m <sup>3</sup>	326 kg																				<input type="checkbox"/>	<input type="checkbox"/>	<input type="checkbox"/>	<input checked="" type="checkbox"/>	<input checked="" type="checkbox"/>	<input type="checkbox"/>			
2.20 m	1.27 m <sup>3</sup>	357 kg																							<input type="checkbox"/>	<input checked="" type="checkbox"/>	<input checked="" type="checkbox"/>	<input type="checkbox"/>	<input type="checkbox"/>	
2.40 m	1.40 m <sup>3</sup>	385 kg																							<input type="checkbox"/>	<input type="checkbox"/>	<input checked="" type="checkbox"/>	<input checked="" type="checkbox"/>	<input checked="" type="checkbox"/>	

All major coupling options available.  = good match     = perfect match



## BALE GRIPPER FOR ROUND BALES



This bale gripper handles and stacks round bales quickly and reliably. The two grab arms pivot to avoid damaging the film wrap when picking up the bale.

### All advantages at a glance

- Bale diameters: 900 - 1,800 mm
- Carrying capacity: 1,400 kg
- Double-acting cylinder with pressure sustaining valve

### Options

- The loader must be specified with a driver protection roof or full cab.

Carrying capacity	Weight	2024	2024 SLT	2028-2	2028 SLT	23e	23e T	24e	2428-2	2428 SLT	2430	2430 SLT	2445 S	2628	2630	2630 SLT	2630 T SLT	3630	3650	3650 SLT	3650 T	3650 T SLT	4670	4670 Z	4670 T	5470 Z	5680 Z	5680 T	6680 Z / 6680 Z-2	6680 T / 6680 T-2	8620 T-2	9640 T-2	9660 T-2		
1,400 kg	202 kg	■	■	■	■	■	■	■	■	■	■	■	■	■	■	■	■	■	■	■	■	■	■	■	■	■	■	■	■	■	■	■	■	■	■

All major coupling options available. □ = good match   ■ = perfect match

## Paddock Cleaner



With the paddock cleaner, mucking out is done quickly. It is ideally suited for mucking out all hard surfaces such as horse paddocks, hard pastures, trails or yard areas. The six reinforced rubber lips collect the manure and transport it into the collection container. The hopper can then be emptied on the manure plate. This technique saves valuable time and leaves a clean result.

### All advantages at a glance

- Robust construction
- Height-adjustable collecting roller
- Manual floating position
- 360° rotatable wheels

### Loader requirements

- Min. 1100 kg lifting capacity
- Additional double-acting hydraulic connection
- 1 electrical connection 12 V switchable
- Hydraulic capacity > 40 l/min
- Locking detent
- Speed selector recommended

### Dimensions

- Working width 1,15 m
- Total length 2,05 m
- Empty weight 420 kg
- Max. Speed: 6 km/h

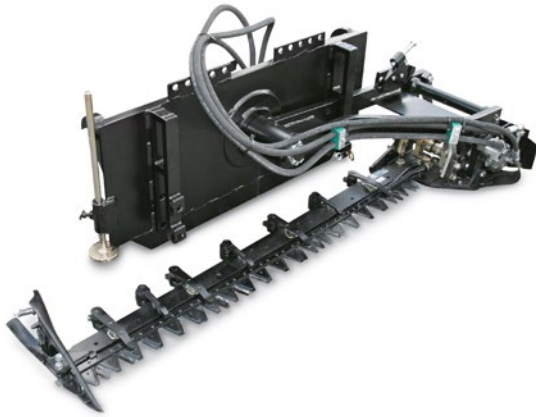


Watch this attachment in use:  
[www.schaeffer.de/en/videos](http://www.schaeffer.de/en/videos)

Overall width	Weight	Min. oil flow	2024	2024 SLT	2028-2	2028 SLT	23e	24e	2428-2	2428 SLT	2430	2430 SLT	2445 S	2628	2630	2630 SLT	2630 T SLT	3630	3650	3650 SLT	3650 T	3650 T SLT	4670	4670 Z	4670 T	5670 Z	5680 Z	5680 T	6680 Z	6680 T	8620 T-2	9640 T-2	9660 T-2
1,30 m	420 kg	40 l/min					☐	☐	☐	☐	■	■	■	■	■	■	■	■	■	■	☐	☐	■	■	☐	☐	☐	☐	☐	☐	☐	☐	☐

All major coupling options available. ☐ = good match   ■ = perfect match

## DOUBLE-BLADE MOWER



The hydraulically driven double-blade mower impresses with a perfect cutting pattern and a high area output at the same time. It cleanly cuts off blades of grass or leaves and thus also offers small creatures sufficient escape routes. Therefore, it can also be optimally used for soil-conserving applications and in organic farming. The inclination of the bar is infinitely adjustable. This means that the mower can also be used on slopes and young hedges.

### All advantages at a glance

- Precise and clean cut protects the turf
- Low energy requirement
- Nature-friendly due to protection of small organisms
- Rapid regrowth
- Versatile use



### Loader requirements

- Pressure free return
- Oil cooling
- Flow distributor is installed on the tool as standard, due to the low oil quantity



Watch this attachment in use:  
[www.schaeffer.de/en/videos](http://www.schaeffer.de/en/videos)

Width	Weight	Min. oil flow	2024	2024 SLT	2028-2	2028 SLT	23e	24e	2428-2	2428 SLT	2430	2430 SLT	2445 S	2628	2630	2630 SLT	2630 T SLT	3630	3650	3650 SLT	3650 T	3650 T SLT	4670	4670 Z	4670 T	5470 Z	5680 Z	5680 T	6680 Z	6680 T	8620 T-2	9640 T-2	9660 T-2
1,05 m	195 kg	20 l/min	□	■	■	■	■	■	■	■	■	■	■	■	■	■	■	■	■	■	■	■	□	□	□	□	□	□	□	□	□	□	□
1,90 m	215 kg	20 l/min	□	□	□	□	■	■	■	■	■	■	■	■	■	■	■	■	■	■	■	■	■	■	■	■	■	■	■	■	□	□	□

All major coupling options available. □ = good match   ■ = perfect match

## FLAIL MOWER SE



This high-quality flail mower is the ideal equipment for mowing, mulching and clipping. The powerful yet soil-friendly machine suits versatile applications, being equally at home in council work, sports ground care, forage harvesting and horse farming.

### All advantages at a glance

- Height-adjustable rolls
- Height-adjustable rear roller
- 1.20 - 1.60 m cutting widths
- Perfect cuts

### Loader requirements

- Pressure free return
- Additional double-acting hydraulic connection
- Speed selector is recommended
- Locking detent is recommended

### Options

- Hammer flails for tall grass
- Scarifying blades



Watch this attachment in use:  
[www.schaeffer.de/en/videos](http://www.schaeffer.de/en/videos)

Width	Weight	Min. oil flow	2024	2024 SLT	2028-2	2028 SLT	23e	24e	2428-2	2428 SLT	2430	2430 SLT	2445 S	2628	2630	2630 SLT	2630 T SLT	3630	3650	3650 SLT	3650 T	3650 T SLT	4670	4670 Z	4670 T	5470 Z	5680 Z	5680 T	6680 Z	6680 T	8620 T-2	9640 T-2	9660 T-2	
1.20 m	210 kg	30 l/min			■	■	■	■	■	■	■	■	■	■	■	■	■	■	■	■	■	■	■	■	■	■	■	■	■	■	■	■	■	■
1.40 m	230 kg	40 l/min							□	□	□	□	■	■	■	■	■	■	■	■	■	■	■	■	■	■	■	■	■	■	■	■	■	
1.60 m	240 kg	50 l/min													□	□	□	□	□	□	□	□	■	■	■									

All major coupling options available.

□ = good match ■ = perfect match



## SE FLAIL MOWER WITH COLLECTING TRAY



The flail collector is a veritable multi talent – the perfect mower and scarifier to cut and collect the material in one operation. The 700L / 900L collector is emptied hydraulically for convenient operation.

### All advantages at a glance

- Cutting height: 30 – 80 mm
- Hydr. emptying
- Height-adjustable, 210 mm diameter rolls

### Loader requirements

- Pressure free return
- 2 additional double-acting hydraulic connections
- Speed selector is recommended
- Locking detent is recommended

### Options

- Hammer flails for tall grass
- Scarifying blades



Watch this attachment in use:  
[www.schaeffer.de/en/videos](http://www.schaeffer.de/en/videos)

Width	Weight	Min. oil flow	2024	2024 SLT	2028-2	2028 SLT	23e	24e	2428-2	2428 SLT	2430	2430 SLT	2445 S	2628	2630	2630 SLT	2630 T SLT	3630	3650	3650 SLT	3650 T	3650 T SLT	4670	4670 Z	4670 T	5470 Z	5680 Z	5680 T	6680 Z	6680 T	8620 T-2	9640 T-2	9660 T-2
1.20 m	280 kg	30 l/min			<input type="checkbox"/>	<input type="checkbox"/>	<input type="checkbox"/>	<input type="checkbox"/>	<input checked="" type="checkbox"/>	<input checked="" type="checkbox"/>	<input checked="" type="checkbox"/>	<input checked="" type="checkbox"/>	<input checked="" type="checkbox"/>	<input checked="" type="checkbox"/>	<input checked="" type="checkbox"/>	<input checked="" type="checkbox"/>	<input type="checkbox"/>	<input type="checkbox"/>	<input type="checkbox"/>	<input type="checkbox"/>													
1.60 m	310 kg	50 l/min			<input type="checkbox"/>	<input type="checkbox"/>	<input type="checkbox"/>	<input type="checkbox"/>	<input type="checkbox"/>	<input type="checkbox"/>	<input type="checkbox"/>	<input type="checkbox"/>	<input checked="" type="checkbox"/>	<input type="checkbox"/>	<input type="checkbox"/>	<input type="checkbox"/>	<input type="checkbox"/>	<input checked="" type="checkbox"/>	<input checked="" type="checkbox"/>	<input checked="" type="checkbox"/>	<input checked="" type="checkbox"/>	<input checked="" type="checkbox"/>	<input checked="" type="checkbox"/>	<input type="checkbox"/>	<input type="checkbox"/>								

All major coupling options available.

= good match     = perfect match

## FENCE TRIMMER



The fence trimmer cuts around fence or crash barrier posts, freeing them effectively and quickly from overgrown grass and weeds. Operated by the loader, the disc unit reaches under the fence and rotates on its axis the moment it contacts the post, cutting and freeing it from all grasses and weeds. The plastic rails protect the post from impact damage.

### All advantages at a glance

- Work width: approx. 95 cm (1.47 m transport width)
- Forward speed: up to 4 km/h
- Tilt: +45° to -30°
- Steel blades or nylon threads
- Hydraulic transport work changeovers
- Electric control unit
- Three suspension springs provide effective ground contour following

### Loader requirements

- 1 da or 1 sa coupler with pressureless return line
- Locking latch
- 12V, 3-pin socket on the operator platform
- Speed selector is recommended

### Options

- Swathing curtain
- Nearside attachment

Work width	Weight	Min. oil flow	2024	2024 SLT	2028-2	2028 SLT	23e	23e T	24e	2428-2	2428 SLT	2430	2430 SLT	2445 S	2628	2630	2630 SLT	2630 T SLT	3630	3650	3650 SLT	3650 T	3650 T SLT	4670
			■	■	■	■	■	■	■	■	■	■	■	■	■	■	■	■	■	■	□	□	□	□
95 cm	265 kg	32 l/min	■	■	■	■	■	■	■	■	■	■	■	■	■	■	■	■	■	□	□	□	□	□

All major coupling options available. □ = good match ■ = perfect match



## BUCKET SWEEPER



This robust sweeper is a versatile attachment that tackles also challenging tasks. Featuring a cutting edge, it removes compacted soil from roads and squares and is also the perfect implement for cleaning horse paddocks. Made from hard-wearing materials, the cutting edges are reversible for extended use and longer wear of the bucket.

### All advantages at a glance

- The cutting edge scrapes mud caked surfaces
- Choice of brush options: Full bristle, combination bristle, snow bristle
- Ø 600 or 750 mm brush

### Loader requirements

- Min. 30 l/min remote oil flow
- The hydraulic folding system requires a minimum 75 l/min oil flow. We recommend opting for a flow control valve on the sweeper.

### Options

- Side-mounted brush
- Ø 750 mm
- Water sprayer
- Hydraulic folding
- LED marker lights, 12/24 V



Watch this attachment in use:  
[www.schaeffer.de/en/videos](http://www.schaeffer.de/en/videos)

Work width	Weight	Brush diameter	2024	2024 SLT	2028-2	2028 SLT	23e	24e	2428-2	2428 SLT	2430	2430 SLT	2445 S	2628	2630	2630 SLT	2630 T SLT	3630	3650	3650 SLT	3650 T	3650 T SLT	4670	4670 Z	4670 T	5470 Z	5680 Z	5680 T	6680 Z	6680 T	8620 T-2	9640 T-2	9660 T-2	
1.50 m	419 kg	600 mm					□	□	■	■	■	■	■	■	■	■	■	■	■	■	■	■	□	□	□									
1.80 m	502 kg	600 mm											□					□	□	□	□	□	■	■	■	□	□	□						
2.10 m	618 kg	750 mm																					□	□	□	■	■	■	■	■	□			
2.40 m	706 kg	750 mm																								□	□	□	□	□	■	■	■	■

All major coupling options available. □ = good match ■ = perfect match

## PUSH BROOM



This push broom makes your loader a sweeping success. Studded with high-quality plastic bristles arranged in 12 rows, this is the broom of choice when it comes to efficient cleaning of yards, sheds and feed tables. Designed for sweeping large areas, it removes straw, fallen leaves and stones and also pushes up silage, always delivering an efficient and clean job.

Attachment/removal is a doddle thanks to the standard-fit fork couplers. Also, it has stands on either side that provide secure storage and protection to the bristles.

### All advantages at a glance

- 12 rows of high-quality plastic bristles
- Bristle length: 288 mm
- Stands left and right
- Standard fork couplers



With SWH headstock



Watch this attachment in use:  
[www.schaeffer.de/en/videos](http://www.schaeffer.de/en/videos)

Width	Weight	2024	2024 SLT	2028-2	2028 SLT	23e	24e	2428-2	2428 SLT	2430	2430 SLT	2445 S	2628	2630	2630 SLT	2630 T SLT	3630	3650	3650 SLT	3650 T	3650 T SLT	4670	4670 Z	4670 T	5470 Z	5680 Z	5680 T	6680 Z	6680 T	8620 T-2	9640 T-2	9660 T-2
1.50 m	190 kg	■	■	■	■	■	■	■	■	■	■	■	■	■	■	■	□	□	□	□	□	□	□									
2.00 m	240 kg	□	□	■	■	■	■	■	■	■	■	■	■	■	■	■	■	■	■	■	■	■	■	■	■	■	■	■	■	■	□	□

All major coupling options available. □ = good match ■ = perfect match

## WEED BRUSH



This powerful weed brush tackles challenging and heavy ground cover. Tilting to either side and lengthwise, the brush head adjusts to any contour and type of terrain and its standard-fit rubber curtain protects the surroundings. For convenient adjustment from the cab, the attachment is available with radio control as an option.

### All advantages at a glance

- Adjustable 0 - 120° side shift
- Adjustable brush tilt (side-/lengthwise)
- Rubber curtain protector
- 22 bristles made of wire cables (especially for heavy ground cover) or flat wire (especially for moss)

### Loader requirements

- Locking detent is recommended
- The hydraulic folding system requires a minimum 75 l/min oil flow. We recommend opting for a flow control valve on the weed brush.

### Options

- Hydraulic side shift control
- Hydraulic side-/lengthwise tilt control
- Radio remote control
- Electric 12/24V diverter valve for tilt range control
- Height-adjustable jockey wheel



Watch this attachment in use:  
[www.schaeffer.de/en/videos](http://www.schaeffer.de/en/videos)

Total width	Weight	2024	2024 SLT	2028-2	2028 SLT	23e	24e	2428-2	2428 SLT	2430	2430 SLT	2445 S	2628	2630	2630 SLT	2630 T SLT	3630	3650	3650 SLT	3650 T	3650 T SLT	4670	4670 Z	4670 T	5470 Z	5680 Z	5680 T	6680 Z	6680 T	8620 T-2	9640 T-2	9660 T-2
2.00 m	210 kg	<input type="checkbox"/>	<input type="checkbox"/>	<input checked="" type="checkbox"/>	<input checked="" type="checkbox"/>	<input checked="" type="checkbox"/>	<input checked="" type="checkbox"/>	<input checked="" type="checkbox"/>	<input checked="" type="checkbox"/>	<input checked="" type="checkbox"/>	<input checked="" type="checkbox"/>	<input checked="" type="checkbox"/>	<input checked="" type="checkbox"/>	<input checked="" type="checkbox"/>	<input checked="" type="checkbox"/>	<input checked="" type="checkbox"/>	<input type="checkbox"/>	<input type="checkbox"/>	<input type="checkbox"/>	<input type="checkbox"/>	<input type="checkbox"/>	<input type="checkbox"/>	<input type="checkbox"/>	<input type="checkbox"/>	<input type="checkbox"/>	<input type="checkbox"/>	<input type="checkbox"/>	<input type="checkbox"/>	<input type="checkbox"/>	<input type="checkbox"/>	<input type="checkbox"/>	<input type="checkbox"/>

All major coupling options available.  = good match     = perfect match



## SALT SPREADER



Equipped for winter use: The salt spreader can be conveniently controlled from the driver's seat via Bluetooth using the smartphone supplied as standard. Rotation speed and application rate can be individually adjusted. The salt spreader is available with either a 120 or 200-litre tank. It is equipped with an additional gear agitator and waterproof hinged lid.

### All advantages at a glance

- Standard with smartphone for control via Bluetooth
- 12-volt geared motor for the spreading disc
- High area output, infinitely adjustable spreading width up to 6m
- Made of 2.5 mm stainless steel with PE hopper and fill level indicator

### Loader requirements

- Pressure fan on loader
- Electrical connection

### Loader requirements

- Salt spreader lighting system acc. to StVZO



Watch this attachment in use:  
[www.schaeffer.de/en/videos](http://www.schaeffer.de/en/videos)

Volume	Weight	2024	2024 SLT	2028-2	2028 SLT	23e	24e	2428-2	2428 SLT	2430	2430 SLT	2445 S	2628	2630	2630 SLT	2630 T SLT	3630	3650	3650 SLT	3650 T	3650 T SLT	4670	4670 Z	4670 T	5470 Z	5680 Z	5680 T	6680 Z	6680 T	8620 T-2	9640 T-2	9660 T-2
120 l	48 kg	<input type="checkbox"/>	<input checked="" type="checkbox"/>	<input checked="" type="checkbox"/>	<input checked="" type="checkbox"/>	<input checked="" type="checkbox"/>	<input checked="" type="checkbox"/>	<input checked="" type="checkbox"/>	<input checked="" type="checkbox"/>	<input checked="" type="checkbox"/>	<input checked="" type="checkbox"/>	<input checked="" type="checkbox"/>	<input checked="" type="checkbox"/>	<input checked="" type="checkbox"/>	<input checked="" type="checkbox"/>	<input checked="" type="checkbox"/>	<input checked="" type="checkbox"/>	<input checked="" type="checkbox"/>	<input checked="" type="checkbox"/>	<input checked="" type="checkbox"/>	<input checked="" type="checkbox"/>	<input checked="" type="checkbox"/>	<input checked="" type="checkbox"/>	<input checked="" type="checkbox"/>	<input checked="" type="checkbox"/>	<input checked="" type="checkbox"/>	<input checked="" type="checkbox"/>	<input checked="" type="checkbox"/>	<input checked="" type="checkbox"/>	<input checked="" type="checkbox"/>	<input checked="" type="checkbox"/>	<input checked="" type="checkbox"/>
200 l	56 kg	<input type="checkbox"/>	<input checked="" type="checkbox"/>	<input checked="" type="checkbox"/>	<input checked="" type="checkbox"/>	<input checked="" type="checkbox"/>	<input checked="" type="checkbox"/>	<input checked="" type="checkbox"/>	<input checked="" type="checkbox"/>	<input checked="" type="checkbox"/>	<input checked="" type="checkbox"/>	<input checked="" type="checkbox"/>	<input checked="" type="checkbox"/>	<input checked="" type="checkbox"/>	<input checked="" type="checkbox"/>	<input checked="" type="checkbox"/>	<input checked="" type="checkbox"/>	<input checked="" type="checkbox"/>	<input checked="" type="checkbox"/>	<input checked="" type="checkbox"/>	<input checked="" type="checkbox"/>	<input checked="" type="checkbox"/>	<input checked="" type="checkbox"/>	<input checked="" type="checkbox"/>	<input checked="" type="checkbox"/>	<input checked="" type="checkbox"/>	<input checked="" type="checkbox"/>	<input checked="" type="checkbox"/>	<input checked="" type="checkbox"/>	<input checked="" type="checkbox"/>	<input checked="" type="checkbox"/>	<input checked="" type="checkbox"/>

Recommended for all models. All major coupling options available.

= good match     = perfect match

## WORKING PLATFORM



The working platform provides stability for working at heights. It also gives access to otherwise difficult areas.

Approved to the German BG I 872 / DGUV 201-029 (5680T) occupational safety and health guidelines.

### All advantages at a glance

- Carrying capacity: 250 kg (2 people and tools)
- Self-locking door

### Loader requirements

- The telescopic wheel loader must be specified with safety cage kit number 104-0000-193.

### Options

- Wood guardrail for chain saw operations



Width	Depth	Weight	5470Z	5680 T	6680 T / 6680 T-2	8620 T-2	9640 T-2
1.30 m	0.86 m	225 kg	☐	■	■	■	■
All major coupling options available.			☐ = good match ■ = perfect match				

## TREE STUMP GRINDER



The powerful tree stump grinder removes tree stumps, stumps and rootstocks of all types of woody plants. It is widely used in garden landscaping, forestry and by local authorities. The cutting teeth are offset and can be rotated 3 times. This ensures high milling performance. A special carbide coating further extends the service life.

### All advantages at a glance

- With hydraulic swivelling device as standard
- Powerful HD piston motor
- Control via joystick or electric valve control

### Loader requirements

- Additional double-acting hydraulic connection
- Pressure free return
- Pressure free leakage oil line
- Hydraulic capacity > 30 l/min for type S
- Hydraulic capacity > 50 l/min for type M



### Technical data

	Type S	Type M
Oil flow	30-50 l/min	50-75 l/min oder 80-110 l/min
Max. oil pressure	250 bar	250 bar
Milling disc	370 mm Ø	470 mm Ø / 570 mm Ø
Number of tilling teeth	12 (21 mm Ø)	16 (25 mm Ø)
Dimensions (LxWxH)	810 x 690 x 580 mm	1240 x 800 x 720 mm



Watch this attachment in use:  
[www.schaeffer.de/en/videos](http://www.schaeffer.de/en/videos)

Type	Weight	Min. oil flow	2024	2024 SLT	2028-2	2028 SLT	23e	24e	2428-2	2428 SLT	2430	2430 SLT	2445 S	2628	2630	2630 SLT	2630 T SLT	3630	3650	3650 SLT	3650 T	3650 T SLT	4670	4670 Z	4670 T	5470 Z	5680 Z	5680 T	6680 Z	6680 T	8620 T-2	9640 T-2	9660 T-2	
S	92 kg	30 l/min							□	□	■	■	■	□	□	■	■	■	■	■	■	■	□	□	□	□								
M	250 kg	50 l/min											■					■	■	■	■	■	■	■	■	■	■	■	■	■	■	■	■	■

All major coupling options available. □ = good match ■ = perfect match



## SOIL REVERSAL TILLER



The hydraulic soil reversal tiller is the reliable partner for seedbed preparation in garden landscaping. The milling blades, which rotate against the direction of travel, pick up the soil and throw it against a sieve grid. Coarse components are sieved out and buried. The soil, freed from grasses and plant residues, lies on top as a top layer. Thanks to the crumbler roller, the soil is reconsolidated.

### All advantages at a glance

- Perfect result in one step – time saving
- Optimum seedbed preparation
- Robust construction
- Versatile use

### Loader requirements

- Pressure free return
- Oil cooling
- Hydraulic capacity > 30 l/min
- Locking detent
- Speed selector recommended



Watch this attachment in use:  
[www.schaeffer.de/en/videos](http://www.schaeffer.de/en/videos)

Width	Weight	Min. oil flow	2024	2024 SLT	2028-2	2028 SLT	23e	24e	2428-2	2428 SLT	2430	2430 SLT	2445 S	2628	2630	2630 SLT	2630 T SLT	3630	3650	3650 SLT	3650 T	3650 T SLT	4670	4670 Z	4670 T	5470 Z	5680 Z	5680 T	6680 Z	6680 T	8620 T-2	9640 T-2	9660 T-2
1,05 m	260 kg	30 l/min			□	□			□	□	■	■	■	■	□	□	□	□	□	□	□	□											
1,25 m	285 kg	30 l/min			□	□			□	□	□	□	□	□	■	■	■	■	■	■	□	□	□	□	□								

All major coupling options available. □ = good match   ■ = perfect match

## POST HOLE DRILLER



Watch this attachment in use:  
[www.schaeffer.de/en/videos](http://www.schaeffer.de/en/videos)

The earth drill offers almost limitless application possibilities: From earth drilling to pile and planting drilling to hole drilling for foundations and masts. Thanks to its robust design with powerful orbital motors, fence construction is also quickly completed. The universal joint on the pick-up of the earth drill ensures that the drill always drills vertically, regardless of how the loader is positioned.

### All advantages at a glance

- Powerful auger for professional use
- Robust construction with low overall height
- Pressure relief valve as standard
- Wide selection of augers with different diameters

### Loader requirements

- Min. 30 l/min remote oil flow
- Additional double-acting hydraulic connection
- Locking detent
- Tandem pump

### Options

- Standard augers for drilling in soil and clay soils
- HD augers for drilling in gravel, asphalt or frozen soils

Weight	Min. oil flow	2024	2024 SLT	2028-2	2028 SLT	23e	24e	2428-2	2428 SLT	2430	2430 SLT	2445 S	2628	2630	2630 SLT	2630 T SLT	3630	3650	3650 SLT	3650 T	3650 T SLT	4670	4670 Z	4670 T	5470 Z	5680 Z	5680 T	6680 Z	6680 T	8620 T-2	9640 T-2	9660 T-2	
195 kg	30 l/min	☐	■	■	■	■	■	■	■	■	■	■	■	■	■	■	■	■	■	■	■	■	■	■	■	■	■	■	■	☐	☐	☐	☐

Recommended for all models. All major coupling options available. ☐ = good match ■ = perfect match

## LEVELLING MACHINE



The laser-controlled levelling machine is an absolute all-rounder for spreading, compacting and levelling on any construction site. Whether for road construction, riding arenas or car parks, with this levelling machine the subsoil is optimally prepared. Levelling surfaces is easy: the machine has a torsion plate at the front to determine the height. When reversing, the machine levels the subsoil at the desired height and inclination. Also available as a standard version without bucket at the front.

### All advantages at a glance

- Widths from 1.20 m to 2.00 m
- Perfect levelling of surfaces
- Laser-controlled height and inclination
- Replaceable Hardox blades and floor
- Hydraulic doors



### Loader requirements

- Pressure free return
- Additional double-acting hydraulic connection
- Electrical connection 1 x 12 V switchable
- Locking detent



Watch this attachment in use:  
[www.schaeffer.de/en/videos](http://www.schaeffer.de/en/videos)

Working Width	Weight	24e	2428-2	2428 SLT	2430	2430 SLT	2445 S	2630 T SLT	3650 T	3650 T SLT	4670 Z	4670 T	5670 Z	5680 Z	5680 T
1,20 m	475 kg	<input type="checkbox"/>	<input checked="" type="checkbox"/>	<input checked="" type="checkbox"/>	<input checked="" type="checkbox"/>	<input checked="" type="checkbox"/>	<input checked="" type="checkbox"/>	<input type="checkbox"/>	<input type="checkbox"/>	<input type="checkbox"/>					
1,40 m	525 kg	<input type="checkbox"/>	<input type="checkbox"/>	<input type="checkbox"/>	<input checked="" type="checkbox"/>	<input checked="" type="checkbox"/>	<input checked="" type="checkbox"/>	<input checked="" type="checkbox"/>	<input checked="" type="checkbox"/>	<input checked="" type="checkbox"/>	<input type="checkbox"/>	<input type="checkbox"/>			
1,60 m	590 kg	<input type="checkbox"/>	<input type="checkbox"/>	<input type="checkbox"/>	<input type="checkbox"/>	<input checked="" type="checkbox"/>	<input checked="" type="checkbox"/>	<input checked="" type="checkbox"/>	<input checked="" type="checkbox"/>	<input checked="" type="checkbox"/>	<input checked="" type="checkbox"/>	<input checked="" type="checkbox"/>			
1,80 m	640 kg							<input checked="" type="checkbox"/>	<input checked="" type="checkbox"/>	<input checked="" type="checkbox"/>	<input checked="" type="checkbox"/>	<input checked="" type="checkbox"/>	<input checked="" type="checkbox"/>	<input checked="" type="checkbox"/>	<input checked="" type="checkbox"/>
2,00 m	920 kg										<input type="checkbox"/>	<input type="checkbox"/>	<input checked="" type="checkbox"/>	<input checked="" type="checkbox"/>	<input checked="" type="checkbox"/>

All major coupling options available.  = good match  = perfect match

Date of issue: March 2022 | Subject to technical changes.



## DUMPSTER BOX



This universal dumpster box for materials such as muck or green clippings has an open front for easy filling with a wheelbarrow. Then the filled box is conveniently transported and unloaded by the loader.

### All advantages at a glance

- Stainless-steel body
- Compact dimensions



Width	Depth	Weight	2024	2024 SLT	2028-2	2028 SLT	23e	23e T	24e	2428-2	2428 SLT	2430	2430 SLT	2445 S	2628	2630	2630 SLT	2630 T SLT	3630	3650	3650 SLT	3650 T	3650 T SLT	4670	4670 Z	4670 T	5470 Z	5680 Z	5680 T	6680 Z / 6680 Z-2	6680 T / 6680 T-2	8620 T-2	9640 T-2	9660 T-2	
1.60 m	1.60 m	165 kg	■	■	■	■	■	■	■	■	■	■	■	■	■	■	■	■	■	■	■	■	■	■	□	□	□	□	□	□	□	□	□	□	□
All major coupling options available.																											□ = good match	■ = perfect match							

## CONTAINER ON WHEELS



This versatile container on wheels collects muck in animal houses as well as green clippings and many further materials outdoors. The large and mid-mounted flotation wheels have ball bearings for smooth movement and easy pushing of the filled container.

### All advantages at a glance

- Stainless steel body
- Wheels with ball bearings
- Swivel wheels at front and rear
- Compact dimensions

### Options

- Stainless-steel or tarpaulin cover



Length	Weight	Volume	2024	2024 SLT	2028-2	2028 SLT	23e	23e T	24e	2428-2	2428 SLT	2430	2430 SLT	2445 S	2628	2630	2630 SLT	2630 T SLT	3630	3650	3650 SLT	3650 T	3650 T SLT	4670	4670 Z	4670 T	5470 Z	5680 Z	5680 T	6680 Z / 6680 Z-2	6680 T / 6680 T-2	8620 T-2	9640 T-2	9660 T-2	
2.30 m	214 kg	2,400 l	■	■	■	■	■	■	■	■	■	■	■	■	■	■	■	■	■	■	■	■	■	■	■	□	□	□	□	□	□	□	□	□	□
All major coupling options available.																											□ = good match	■ = perfect match							