

TECHNICAL SPECS

Schäffer Model 3650 T SLT

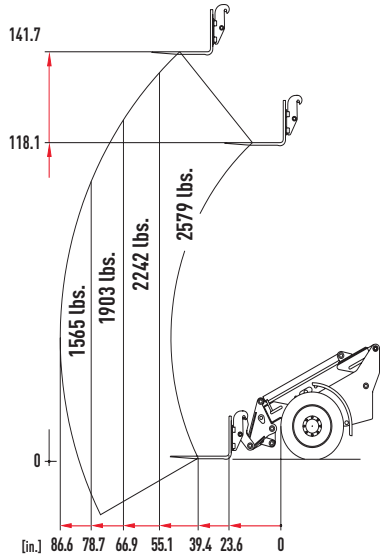
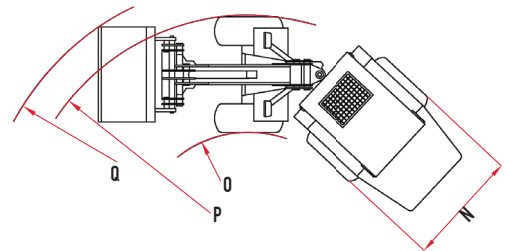
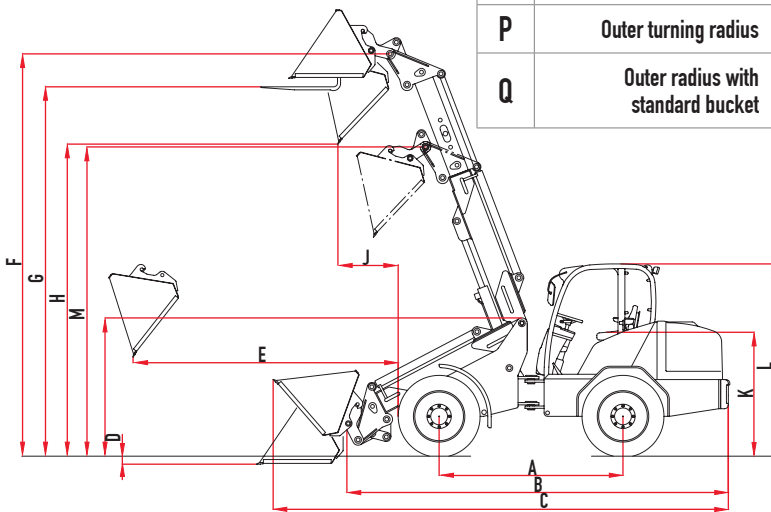


Diagram refers to the lift capacity in relation to the boom extension, when used with forks on stable ground (according EN 474-3)

| | DIMENSIONS | 3650 T SLT |
|---|--|----------------|
| A | Wheelbase | 6 ft 3.6 in |
| B | Chassis length | 13 ft 4.2 in |
| C | Overall length with standard bucket | 15 ft 6.4 in |
| D | Digging depth | 5.9 in |
| E | Forward reach | 5 ft 10.1 in |
| F | Max. bucket pivot height | 12 ft 7.6 in |
| G | Loading height with pallet fork | 11 ft 8.9 in |
| H | Max. dumping height | 9 ft 10.5 in |
| I | Front end height | 5 ft 3 in |
| J | Dumping depth | 2 ft 11 in |
| K | Seat height | 3 ft 6.5 in |
| L | Protective roof height | 6 ft 10.7 in |
| M | Swivelling point, telescopic arm retracted | 10 ft 5.2 in |
| N | Overall width | 55.9 - 68.1 in |
| O | Inner turning radius | 4 ft 2.8 in |
| P | Outer turning radius | 8 ft 10.7 in |
| Q | Outer radius with standard bucket | 10 ft 0.5 in |

| | TECHNICAL DATA | 3650 T SLT |
|--|-------------------------------------|--|
| | Engine | 3 Cyl. KUBOTA TURBO D1803-CR-T, 50 hp (37 kW) |
| | Traction hydraulics | Hydrostatic-automotive, HTF (High Traction Force) |
| | Service braking system | Combined brake hydrostatic and multi-disc brake |
| | Parking brake | Multi-disc brake running in oil bath |
| | Working hydraulics output/pressure | Delivery rate: 13.5 GPM Operating pressure: 2,900 psi |
| | Steering | Hydraulic articulated pendulum steering |
| | Operating weight | 8,157 lbs |
| | Lifting capacity | 4,299 lbs |
| | Tipping load, straight ¹ | 3,770 lbs |
| | Axles | Original Schäffer axles, 6-hole rim; Option: automatic slip-control differential |
| | Speed | 12.4 mph in 2 gears switchable under load, Option: 18.6 mph |
| | Electric system | Operating voltage: 12 V |
| | Fill quantities | Fuel: 14.5 gal Hydraulic oil: 12.7 gal |
| | Sound pressure level LpA | 84 dB(A) |



¹ Boom horizontal, not extended with pallet fork (acc. To ISO 14397)
Tire dimensions and additional equipment can change the operating weight, tipping load, and payload.

Wheel Options

(Standard tire option highlighted in yellow)

| DIMENSION | LOADER WIDTH (in)* | TREAD OPTIONS |
|--------------|----------------------|--------------------------|
| 425/55-17 | 60.6 (68.1) - 67.3** | AS Farmer, FL693 Ridemax |
| 15.0/55-17 | 55.9 - 65.7 | AS Farmer |
| 440/50-17 | 60.6 (68.1) - 64.6** | Allground |
| 33x15.5-16.5 | 60.2 | SKD |



AS FARMER



FL693 RIDEMAX



ALLGROUND



SKD

*Measurements vary based on rim offset configurations.

**Measurements in brackets for width with turned wheels.